

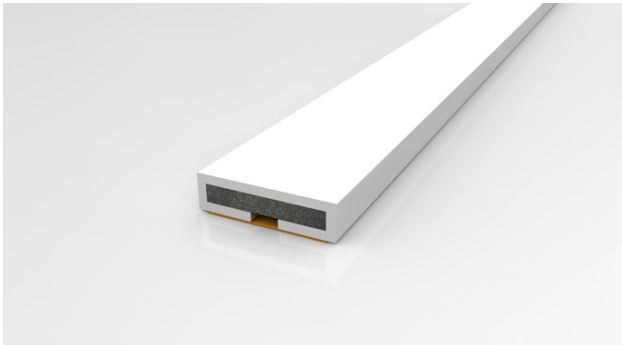
Intumescent Seal

Fire Only by Pyroplex

NORSEAL
SPECIALIST SEAL SOLUTIONS

Call us on **+44 (0)1661 830088**

Email us at sales@norseal.co.uk



Specification

Application

Rebates in single and double action, single or double, latched and unlatched doors

Colour

White, black, brown, cream, grey, platinum

Fixing

Rout-in self adhesive

Length (mm)

1050, 2100, 3000

Material

Graphite intumescent within a PVC-u case

Pack Quantity

10x4 - 125, 15x4 - 75, 20x4 - 50, 25x4 - 35

Size (mm)

10x4, 15x4, 20x4, 25x4, 30x4, 38x4

Benefits

Self-adhesive backing

Easy to cut

Wet or dry applications

BS 476-22

Protects against fire

Rigid case for durability

Certifire CF355

BS EN 1634-1:2008